

winterhalter

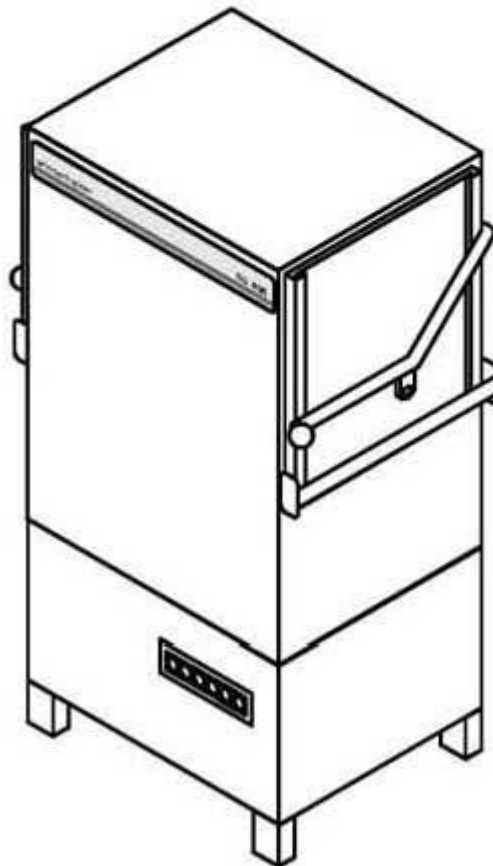
Spare Parts List

GS 41/5

Edited: 05/97

Revised: 01.08.08

Part no.: 89002679



Summary

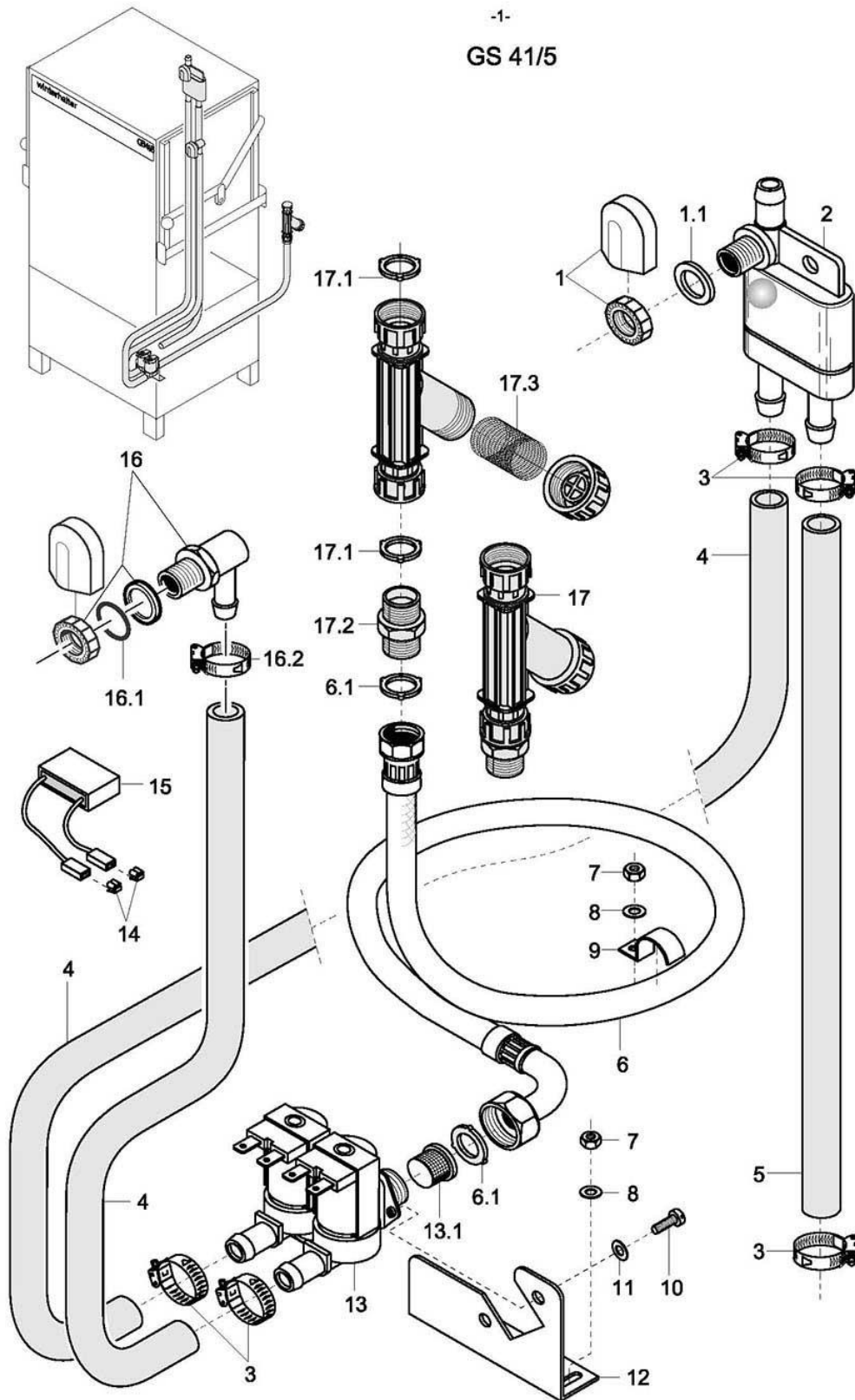
Water inlet	Page	1	and	2
Water inlet Tundish (Great Britain)	Page	3	and	4
Tank heating and water drain	Page	5	and	6
Mediamat	Page	7	and	8
Wash system I	Page	9	and	10
Wash system II	Page	11	and	12
Rinsing I	Page	13	and	14
Rinsing II - AquaMatik	Page	15	and	16
Rinsing III - Aquamatik	Page	17	and	18
Rinsing IV	Page	19	and	20
Dosing	Page	21	and	22
Panelling	Page	23	and	24
Door	Page	25	and	26
Electrical parts I	Page	27	and	28
Electrical parts II	Page	29	and	30
Glass-washing kit (option)	Page	31	and	32

Please note the following points with regard to this list:

See separate list for racks and accessories.

Enter the required quantity in the column marked "Pc." if more than 1 part is installed and if this part is not a standard part.

-1-
GS 41/5



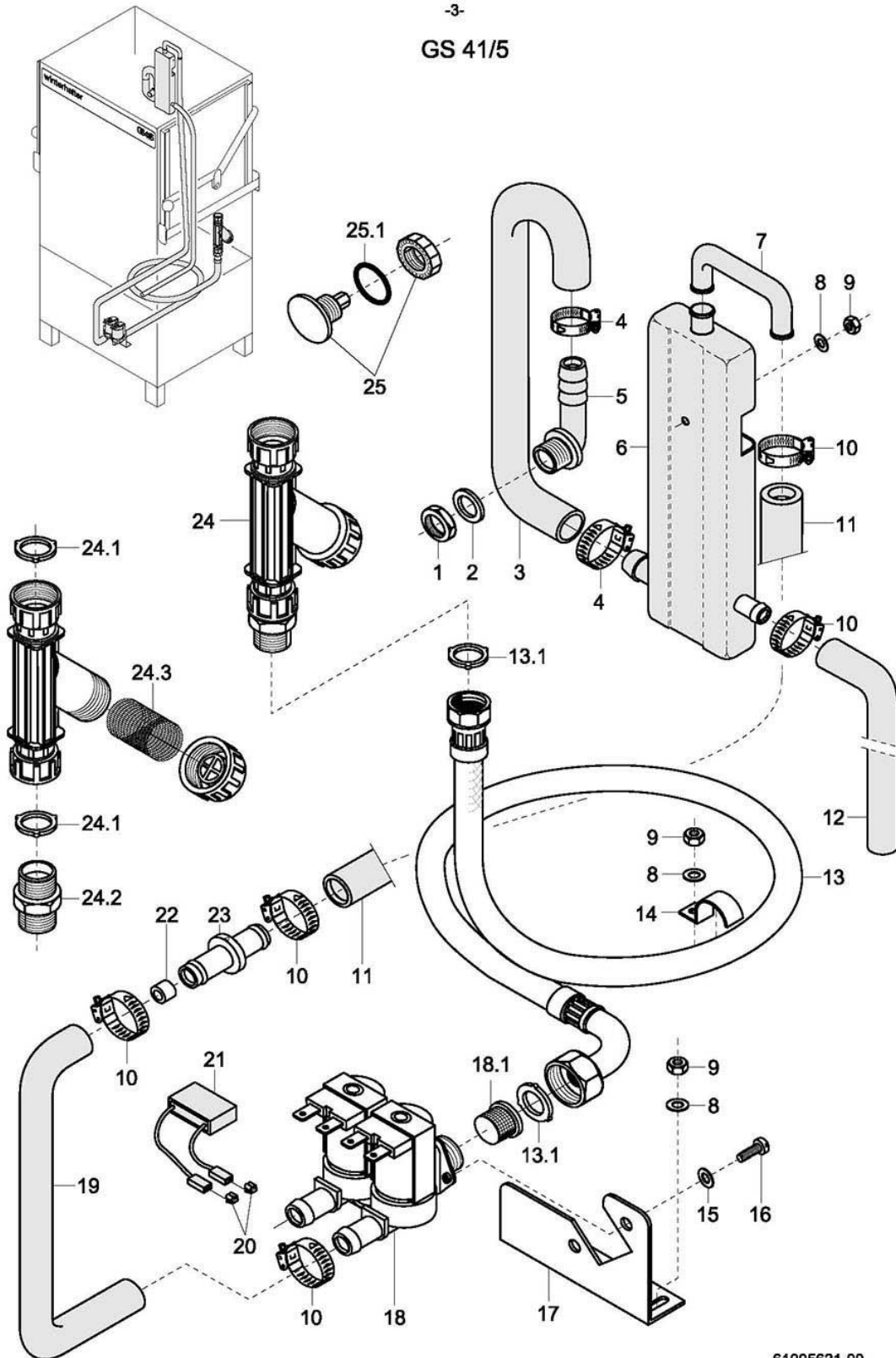
61005620-00

GS 41/5

Water inlet

Item	Designation	Part no.	Pc.	Notes
1	Tank inlet set	61004545		incl. item 1.1
1.1	Seal; \varnothing 17 x \varnothing 24 x 2.0	62001366		
2	Backflow restrictor; lateral	35 01 194		
3	Hose clip; \varnothing 14 - 24 x 9	28 02 108		
4	Shaped hose; nom. dia. 12.5 x 4.0 x 1300	40 03 051	2	cut to size
5	Hose; nom. dia. 13.5 x 3.5 x 1345	40 02 029		per metre
6	Metal hose; nom. dia. 15 x 2000; G3/4"	29 01 316		incl. item 6.1
	Metal hose; nom. dia. 12 x 1500; G 3/4"; WRC-tested	29 01 305		Great Britain only
6.1	Seal; \varnothing 16 x \varnothing 24 x 3.0	80002241	2	
7	Hex nut; M 5 self-locking	21 05 302		
8	Washer; \varnothing 5.3 x \varnothing 12 x 0.8	22 02 213		
9	Clip	55 25 017	2	
10	Pan-head screw; M 4 x 8	20 10 210		
11	Washer; \varnothing 4.3 x \varnothing 8 x 0.5	22 02 202		
12	Support; solenoid valve	61003723		
13	Double solenoid valve; 220-240V; 50/60Hz	31 06 182		incl. item 13.1
	Double solenoid valve; 180-220V; 50/60Hz	31 06 200		Japan
	Solenoid valve (flow controller 15l) ; 220-240V;50/60Hz	31 06 180		with double water connection
13.1	Dirt trap	31 06 186		
14	Tab connector	31 12 018	2	only with AquaMatik; connect
15	RC element; 0.15 μ F; 3.3k Ω	31 13 114		parallel to item 13
16	Water inlet set	55 31 007		incl. items 16.1, 16.2
16.1	Seal; D21 x D28 x 2,0	27 09 011		replaced by 55 31 007
16.1	Seal; \varnothing 20.5 x \varnothing 28.5 x 2.0	27 01 002		replaced by 55 31 007
16.1	O-ring; 20 x 3	27 07 031		
16.2	Hose clip; \varnothing 14 - 24 x 9	28 02 108		
17	Dirt collector cpl.	80002153		incl. items 17.1 - 17.3
17.1	Seal; \varnothing 16 x \varnothing 24 x 3.0	80002241	2	
17.2	Union stem; G 3/4" x 40; width A/F30	80002167		
17.3	Dirt trap	80002728		
	Strainer for dirt trap with right-angled outlet	31 06 135		
n.p.	Extension hose; 1m	29 01 307		Additional equipment
n.p.	Seal; \varnothing 16 x \varnothing 24 x 3.0	80002241		Additional equipment

-3-
GS 41/5



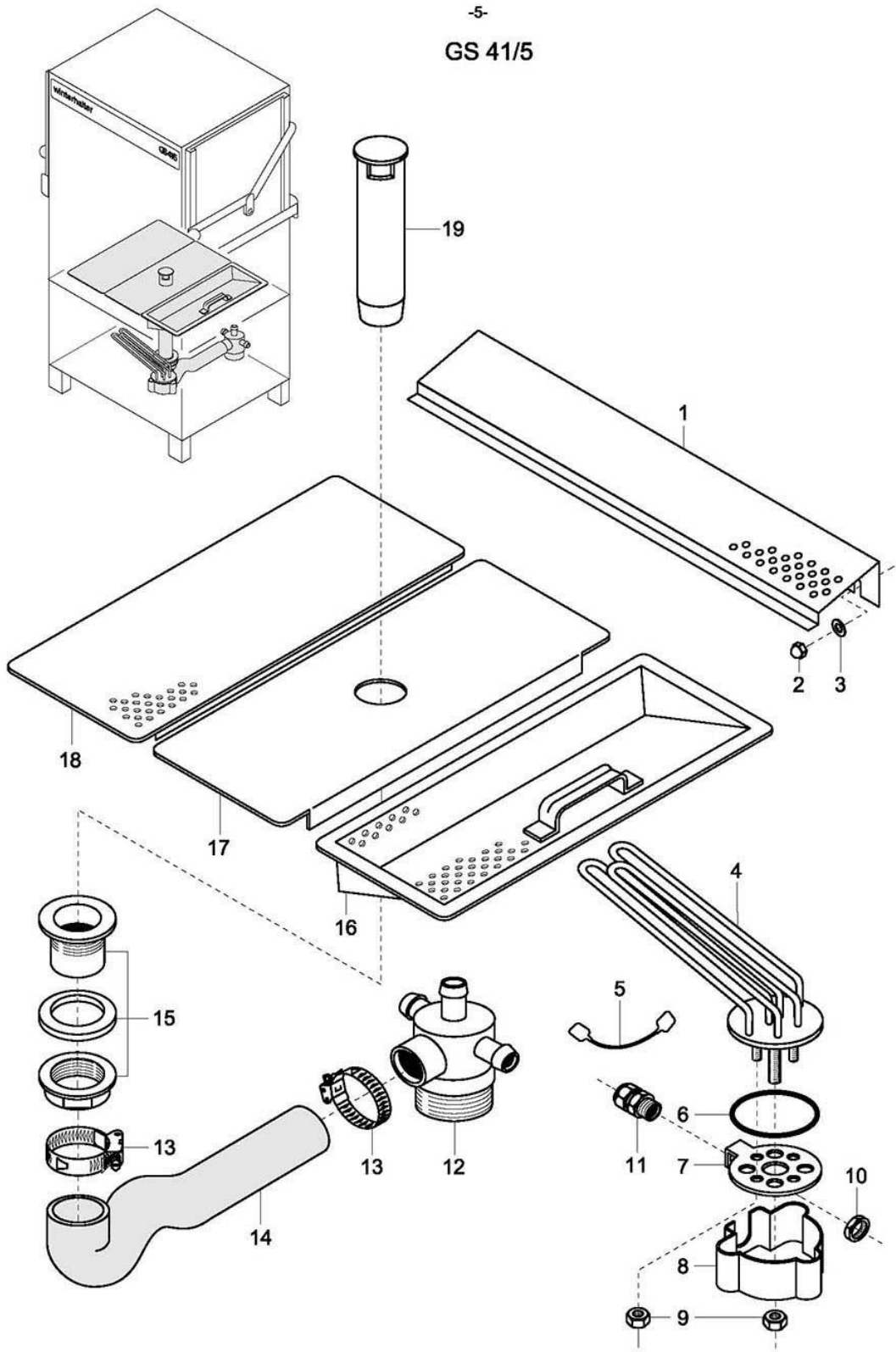
61005621-00

GS 41/5

Water inlet - Tundish (Great Britain)

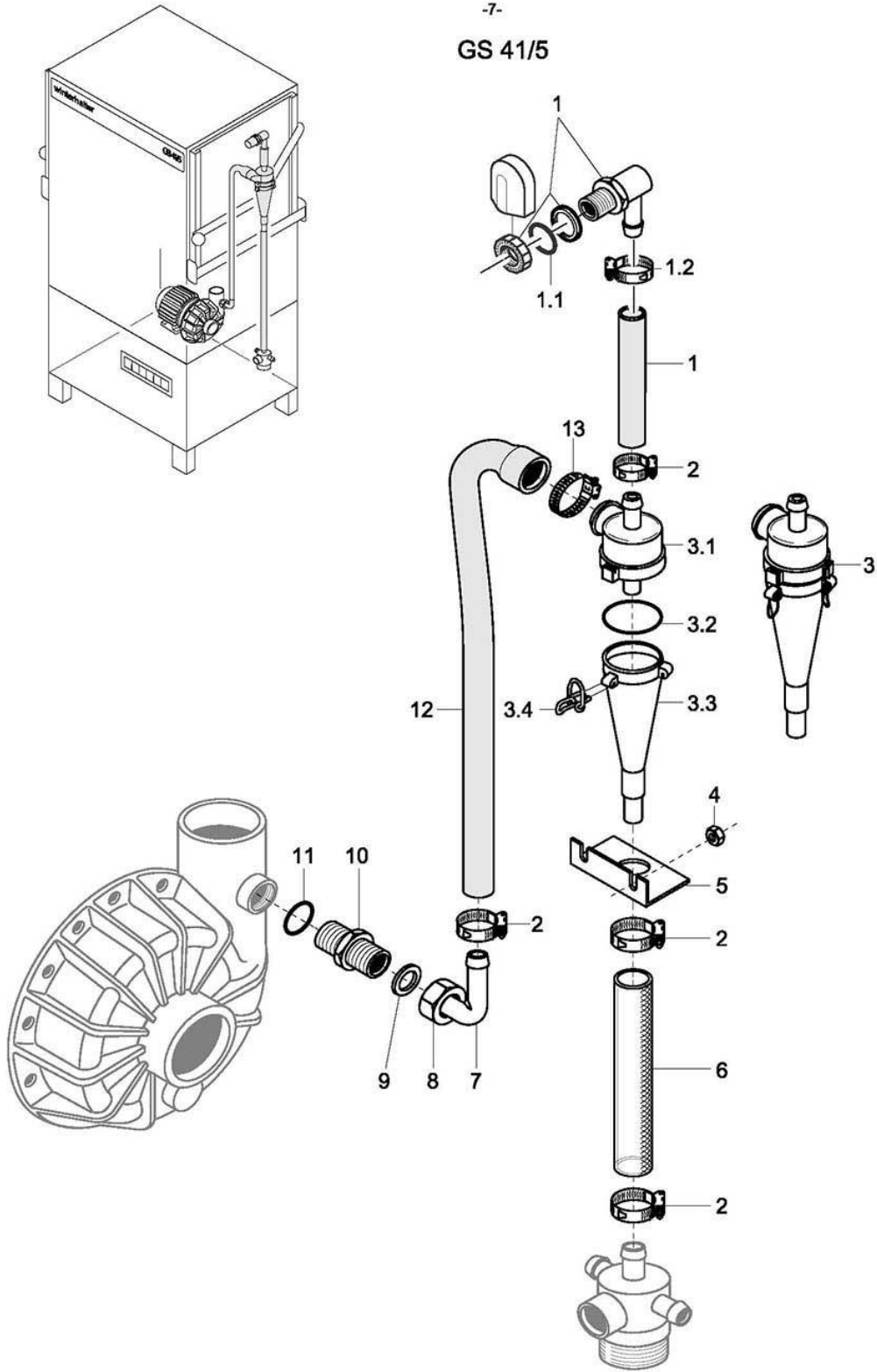
Item	Designation	Part No.	Pc.	Notes
1	Lock nut; G 3/4" x 18; width across flats 32	30 09 502		
2	Seal; \varnothing 26 x \varnothing 36 x 2.0	27 01 003		
	O-ring; 24 x 3.0	27 07 066		
3	Hose bend; nom. dia. 25 x 4.0	61004322		
4	Hose clip; \varnothing 24 - 44 x 12	28 02 309		
5	Wash manifold	62002887		adapt
6	Intermediate tank	60002542		
7	Pipe bend; \varnothing 12 x \varnothing 14 x 2.0	60002507		
8	Washer; \varnothing 5.3 x \varnothing 10.0 x 1.0	22 01 300		
9	Hex nut; M 5 self-locking	21 05 302		
10	Hose clip; \varnothing 14 - 24 x 9	28 02 108		
11	Hose; nom. dia. 13.5 x 3.5 x 1300	40 02 029		per metre
12	Shaped hose; nom. dia. 12.5 x 4.0	40 03 050		adapt
13	Metal hose; nom. dia. 12 x 1500; G 3/4"; WRC-tested	29 01 305		incl. item 13.1
13.1	Seal; \varnothing 16 x \varnothing 24 x 3.0	80002241	2	
14	Clip	55 25 017		
15	Lock washer; B 4	23 03 304		
16	Pan-head screw; M 4 x 8	20 10 309		
17	Support; solenoid valve	61003723		
18	Double solenoid valve; 220-240V; 50/60Hz	31 06 182		incl. item 18.1
	Solenoid valve (flow controller 15l); 220-240V; 50/60Hz	31 06 180		
18.1	Dirt trap	31 06 186		
19	Hose; nom. dia. 13.5 x 3.5 x 320	40 02 029		per metre
20	Tab connector	31 12 018	2	
21	RC element; 0.15 μ F; 3.3k Ω	31 13 114		
22	Flow controller (5 l/min)	31 06 195		
23	Adaptor	61004511		
24	Dirt collector cpl.	80002153		incl. items 24.1 - 24.3
24.1	Seal; \varnothing 16 x \varnothing 24 x 3.0	80002241	2	
24.2	Union stem; G 3/4" x 40; width A/F30	80002167		
24.3	Dirt trap	80002728		
25	Plug; G 3/8"	70004899		incl. item 25.1
25.1	O-ring; 16 x 2.5	27 07 001		

-5-
GS 41/5

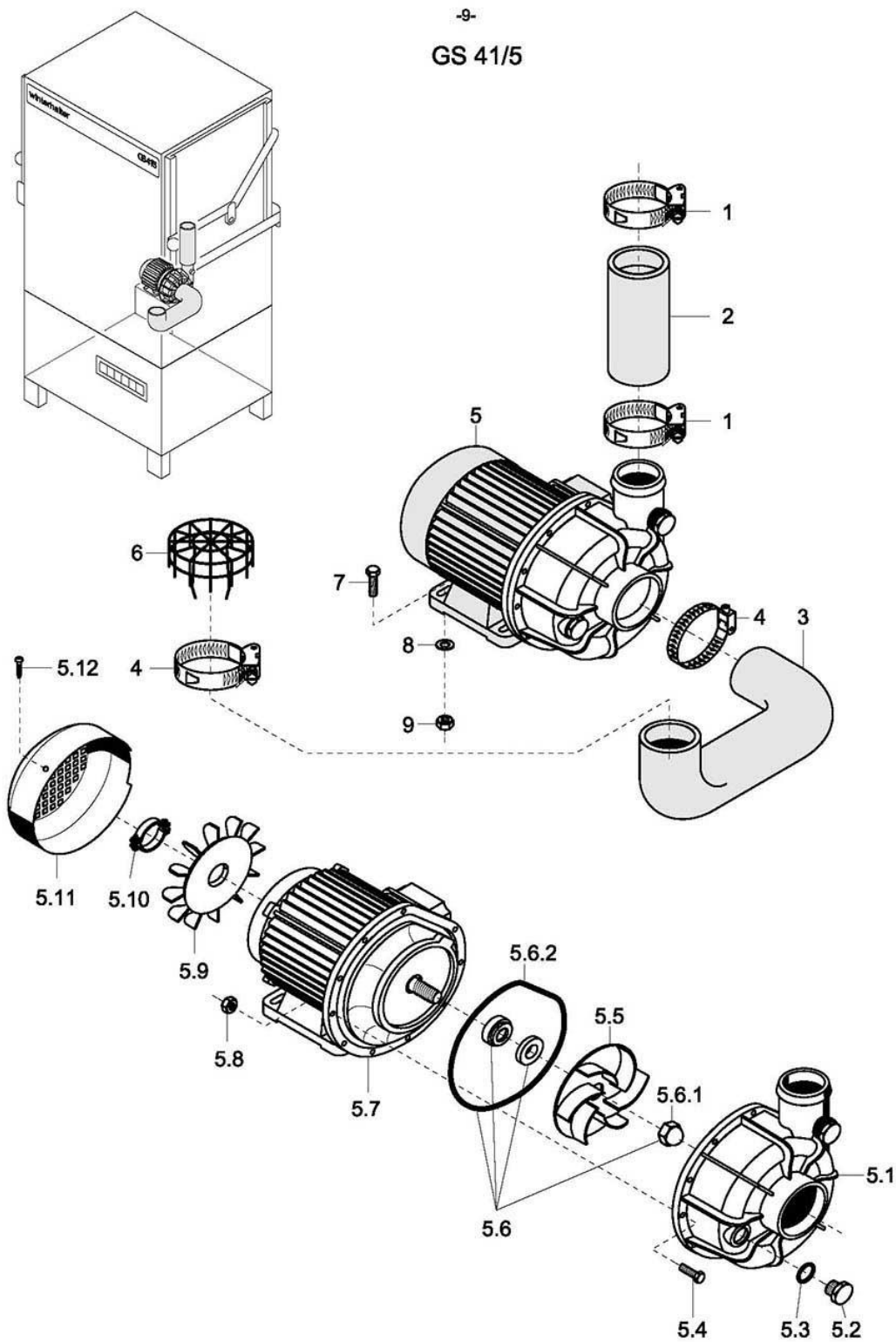


61005622-00

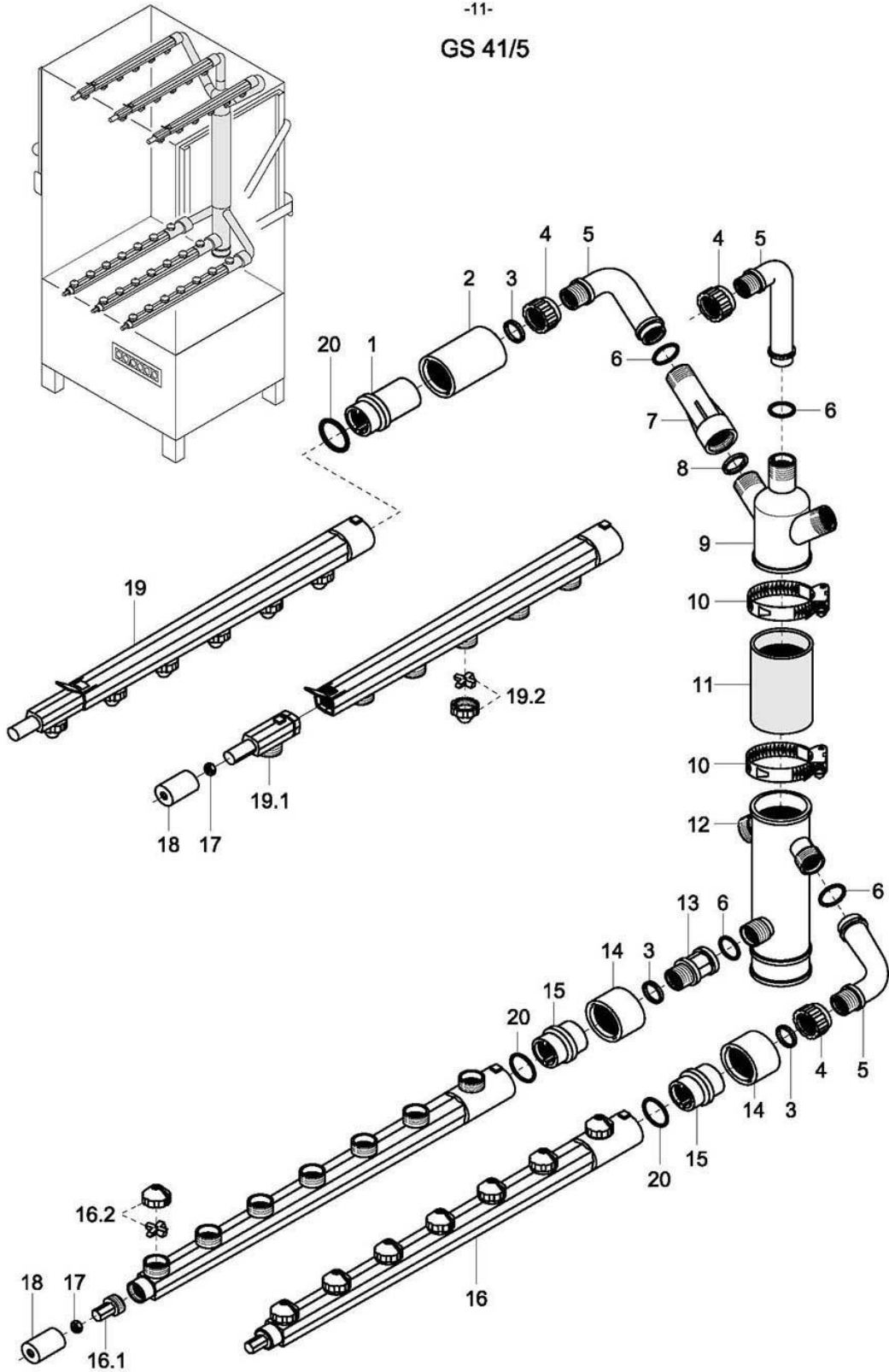
GS 41/5



-9-
GS 41/5

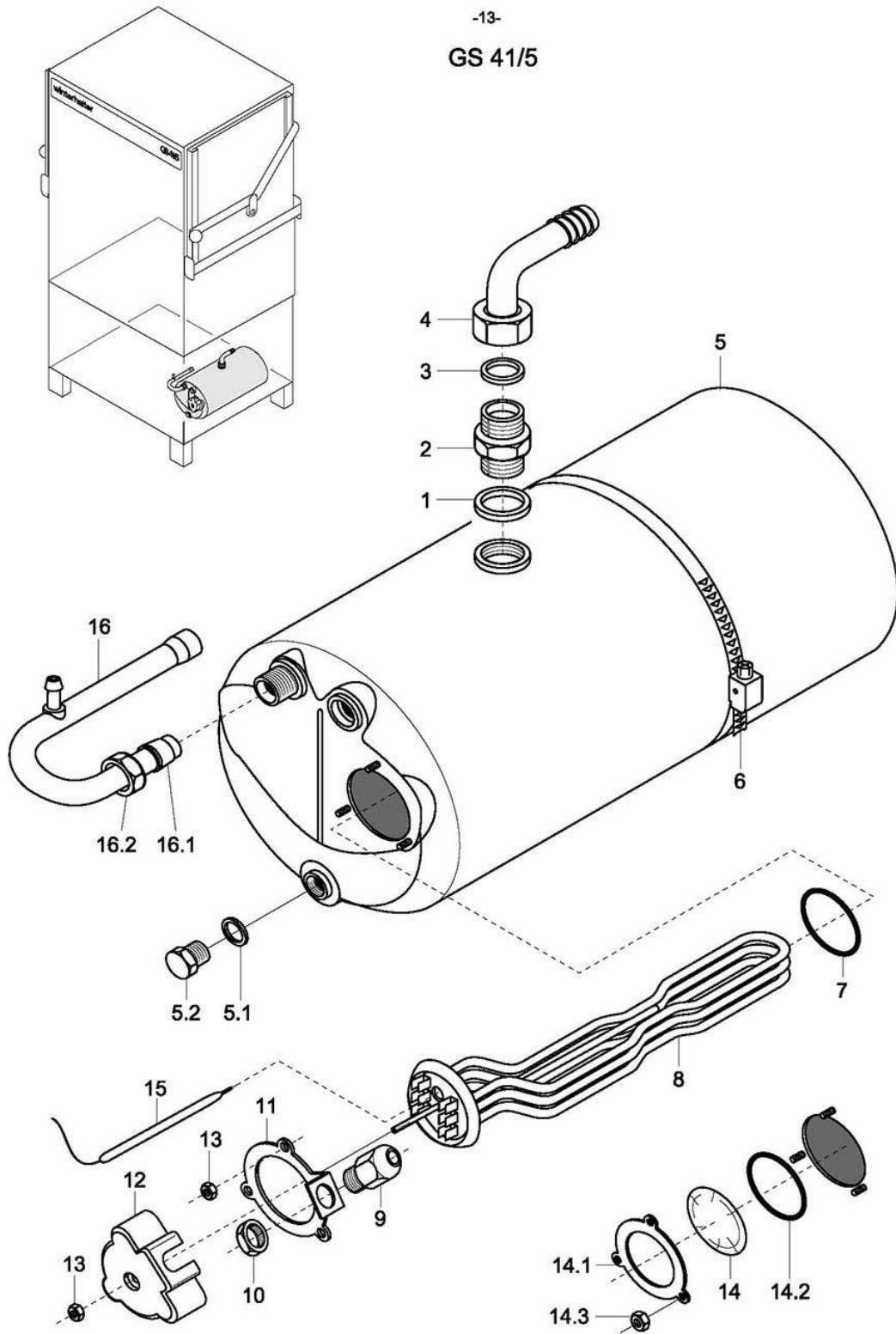


-11-
GS 41/5

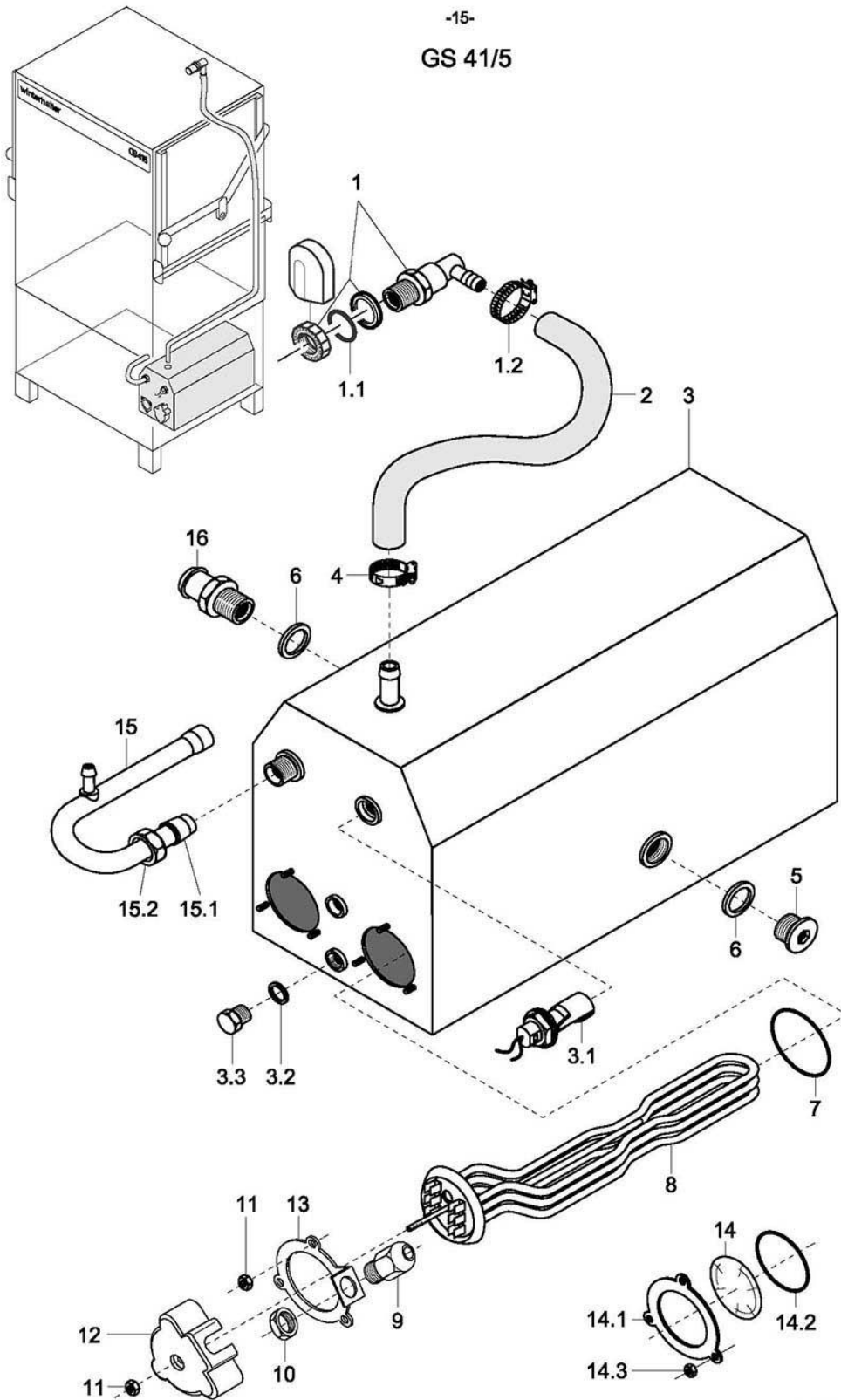


61005625-01

-13-
GS 41/5



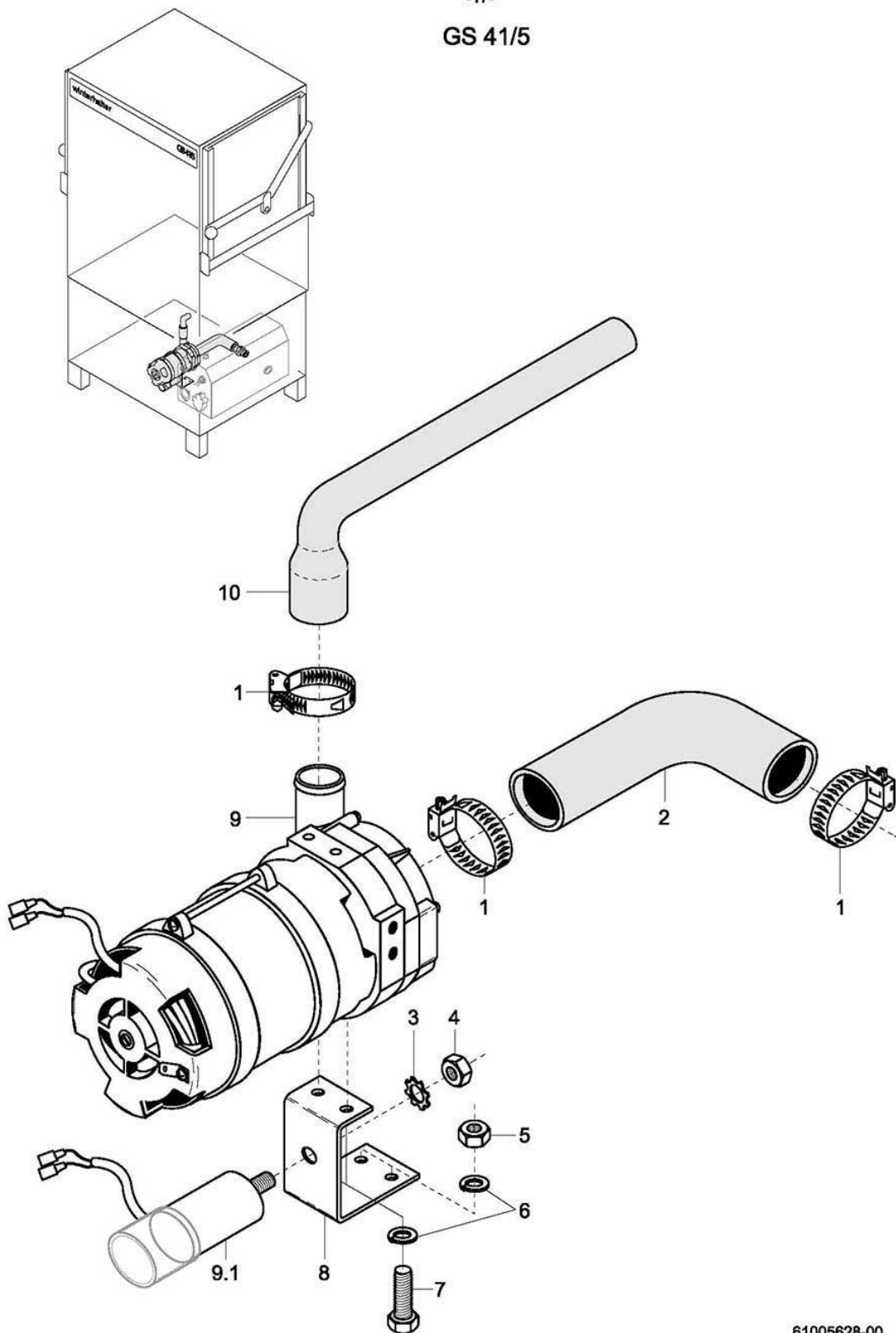
-15-
GS 41/5



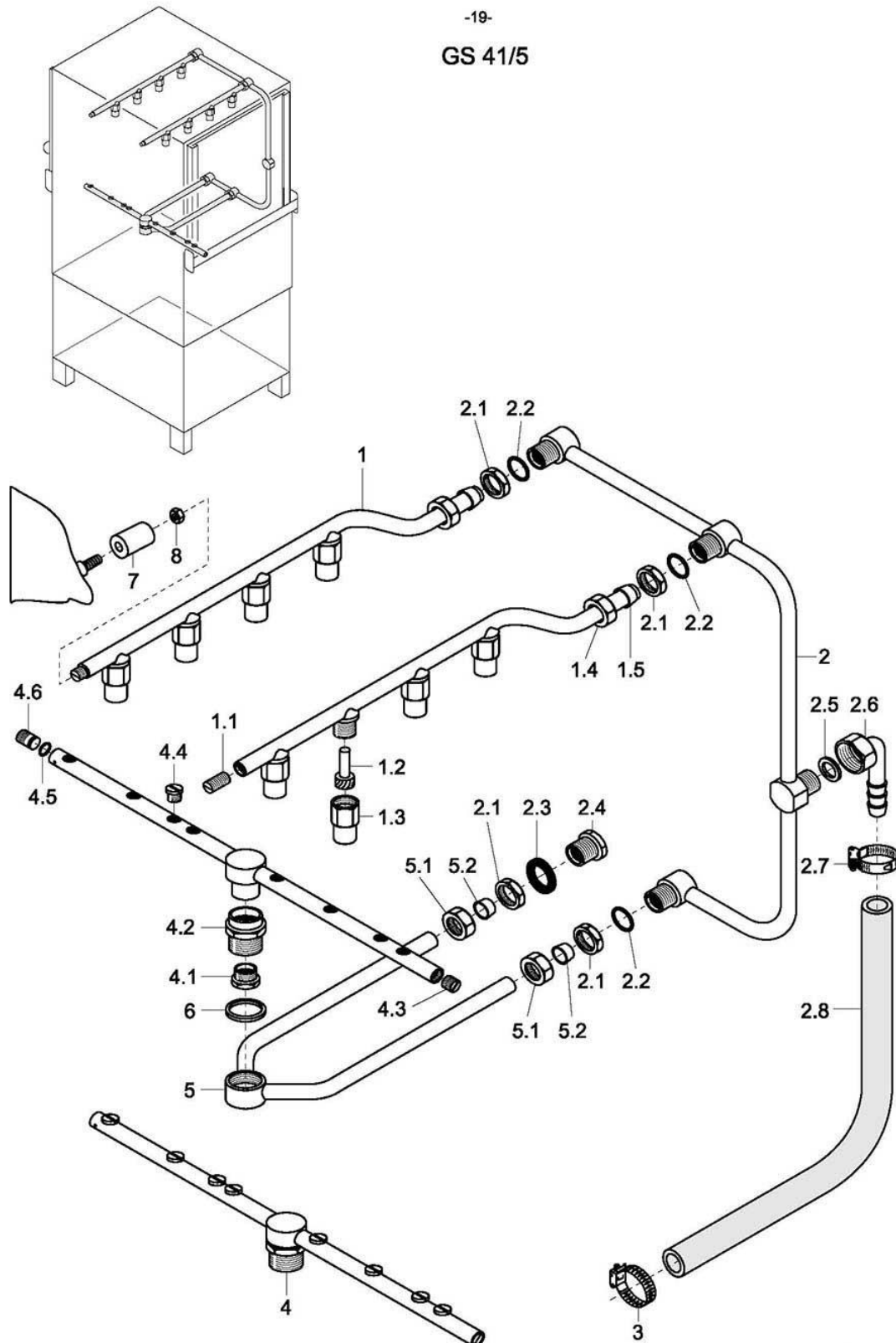
GS 41/5

Rinsing II - AquaMatik

Item	Designation	Part no.	Pc.	Notes
1	Water inlet set	55 31 007		incl. items 1.1 - 1.2
1.1	Seal; D21 x D28 x 2,0	27 09 011		replaced by 55 31 007
1.1	Seal; \varnothing 20.5 x \varnothing 28.5 x 2.0	27 01 002		replaced by 55 31 007
1.1	O-ring; 20 x 3	27 07 031		
1.2	Hose clip; \varnothing 14 - 24 x 9	28 02 108		
2	Shaped hose; nom. dia. 12.5 x 4.0 x 1520	40 03 051		
3	Boiler frame cpl., non-pressurised	80002128		incl. items 3.1 - 3.3
3.1	Float switch set; 250V; 15VA	55 28 255		
n.p.	Seal; float switch	31 26 036		
3.2	Seal; \varnothing 10 x \varnothing 18 x 1.5	27 03 003		
3.3	Hex-head screw; M 10 x 16	20 01 352		
4	Hose clip; \varnothing 14 - 24 x 9	28 02 108		
5	Locking screw; G 1/2"	30 08 303		
6	Seal; \varnothing 21 x \varnothing 28 x 2.0	27 09 011	2	
7	O-ring; 46 x 7.0	27 07 069	2	
8	Heating element cranked; 6.0kW; 230V/400V/3	31 03 017		
	Heating element cranked; 6.0kW; 240V/420V/3	31 03 043		
	Heating element cranked; 6.0kW; 200V/346V/3	31 03 046		
n.p.	Star bridge with nozzle; 2.5 mm ²	31 23 088	2	
9	Cable gland; PG 13.5	31 10 040		
10	Hex nut; PG 13.5	31 10 041		
11	Hex nut; M 5	21 01 203		
12	Cap	31 03 014		
13	Clamping plate cpl.	55 19 018		
14	Blank flange; \varnothing 60	60002787		incl. items 14.1 - 14.3
14.1	Clamping plate; galvanised	01 17 003		
14.2	O-ring; 46 x 7.0	27 07 069		
14.3	Hex nut; M 5	21 01 203		
15	Boiler inlet bend cpl.	55 09 054		incl. items 15.1, 15.2
15.1	Cutting ring; \varnothing 15 x 10; nom. dia. 12	29 07 300		
15.2	Cap nut; G 1/2" x \varnothing 12.2; width A/F 24	29 07 201		
16	Hose stem; \varnothing 26 x 41; G 1/2"; width A/F 27	80001403		



GS 41/5

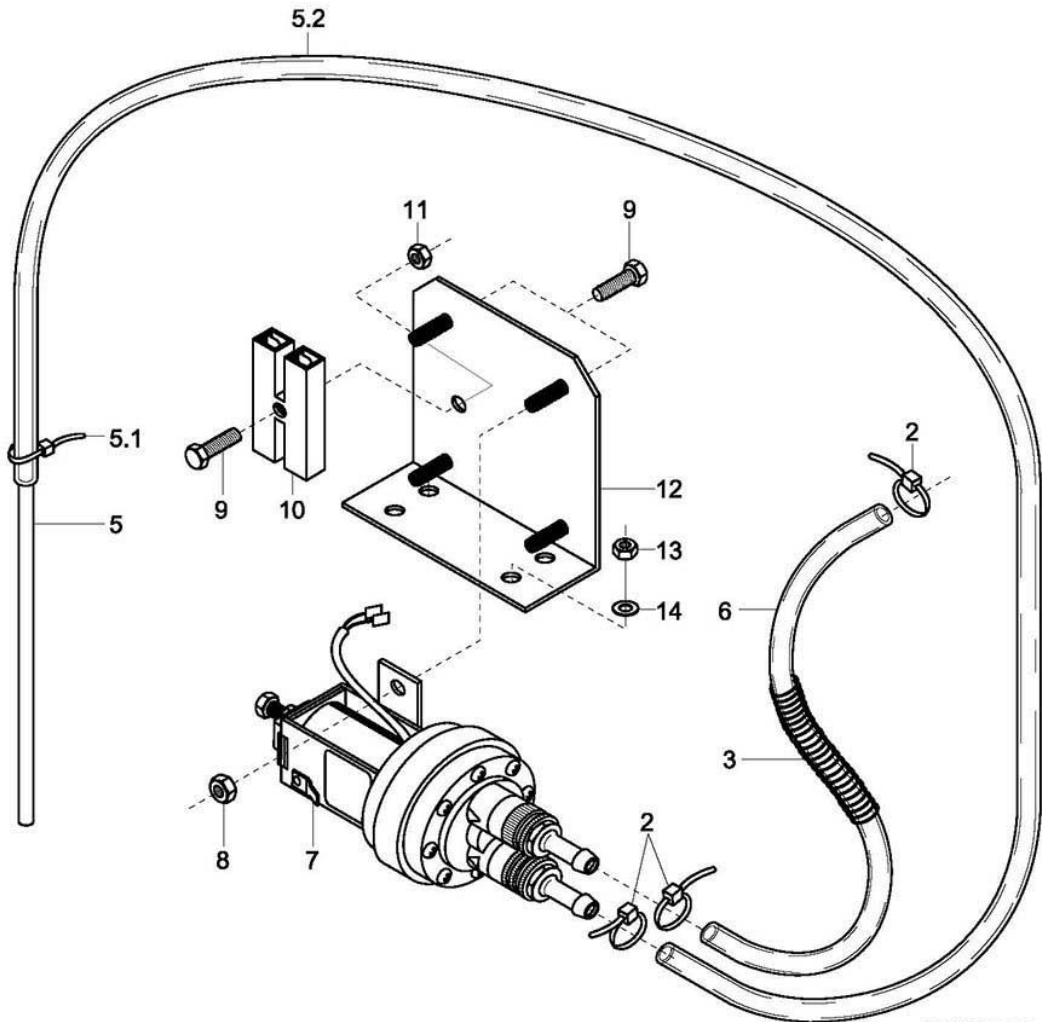
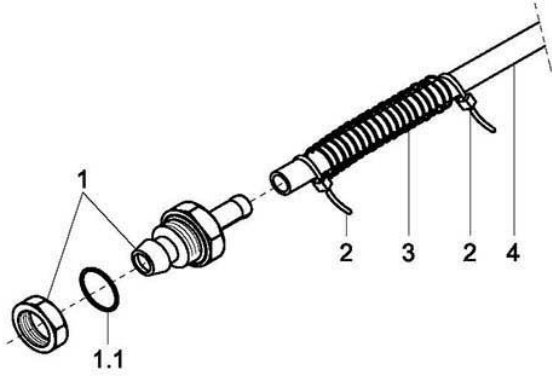
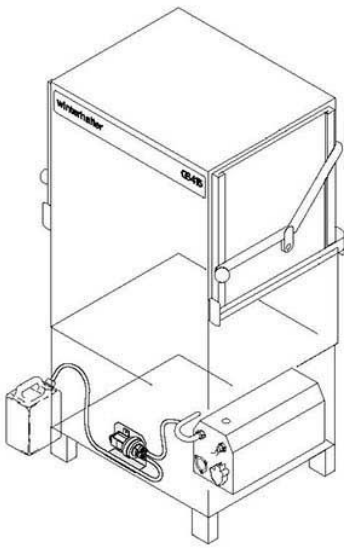


GS 41/5

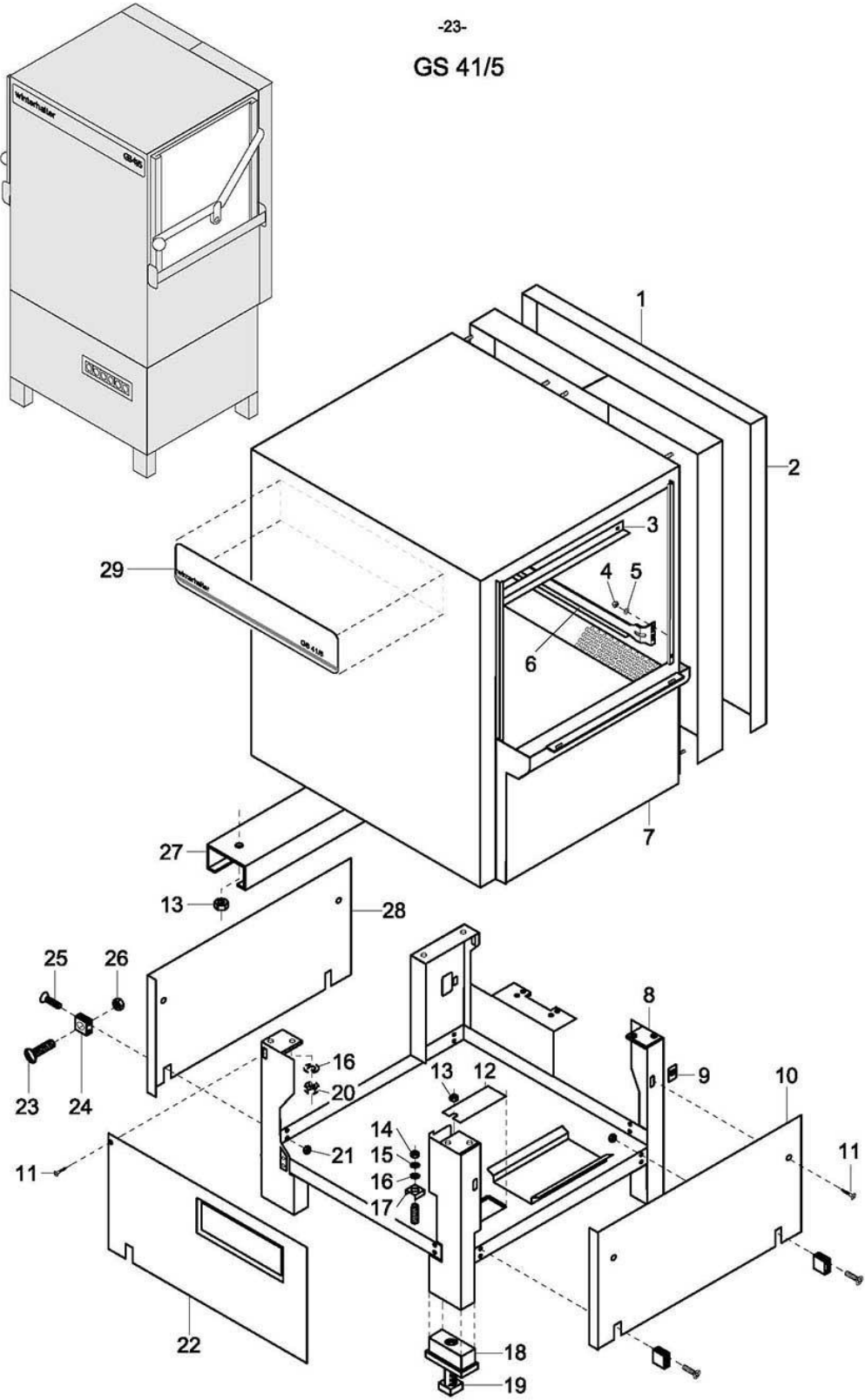
Rinsing IV

Item	Designation	Part no.	Pc.	Notes
1	Rinse pipe; cpl.	61004421	2	incl. items 1.1 - 1.5
1.1	Grub screw; M 9 x 40	20 30 502	2	
1.2	Nozzle swirl device; \varnothing 8 x 18.8	65002764	8	
1.3	Nozzle cap; \varnothing 14.6 x 21	65002765	8	
1.4	Cap nut; G 3/8" x \varnothing 10.2	29 07 200	2	
1.5	Cutting ring; \varnothing 13 x 10; nom. dia. 10	29 07 303	2	
2	Rinse manifold; cpl.	61004985		incl. items 2.1-2.8
2.1	Hex nut; G 3/8" x 5.5	30 09 200	4	
2.2	O-ring; 16 x 2.5	27 07 001	3	from 10/98
	Seal; \varnothing 17 x \varnothing 24 x 2.0	27 09 009	4	until 09/98
2.3	Seal; \varnothing 17 x \varnothing 24 x 2.0	27 09 009		
2.4	Nipple; G 3/8"	61002295		
2.5	Seal; \varnothing 14 x \varnothing 23.5 x 2.0	27 01 028		
2.6	Hose stem angled; \varnothing 18	60002474	2	
2.7	Hose clip; \varnothing 20 - \varnothing 30 x 12	28 02 109	2	
2.8	Hose; nom. dia. 13.5 x 3.5 x 800	40 02 029		per metre; boiler pressurized
	Shaped hose; nom. dia. 25/13 x 3,5; 40 x 800	61004321		Boiler; non-pressurized
3	Hose clip; \varnothing 20 - \varnothing 30 x 12	28 02 109		Boiler pressurized
	Hose clip; \varnothing 24 - 44 x 12	28 02 309		Boiler; non-pressurized
4	Revolving arm cpl.	55 10 091		incl. items 4.1 - 4.6
4.1	Revolving arm screw; M 14 x 1	20 19 204		
4.2	Revolving arm bush; G 3/4" x 24.5	35 01 161		
4.3	Grub screw; M 11 x 1.0 x 8	29 10 239		
4.4	Flat jet nozzle	29 10 312	8	
4.5	O-ring; 7 x 1.5	27 07 014		
4.6	Grub screw; M 11 x 0,75 x 14	29 10 240		
5	Revolving arm support cpl.	61004444		incl. items 5.1, 5.2
5.1	Cap nut; G 3/8" x \varnothing 10.2	29 07 200	2	
5.2	Cutting ring; \varnothing 13 x 10; nom. dia. 10	29 07 303	2	
6	Seal; \varnothing 27 x \varnothing 34 x 2.0	27 09 025		
7	Bush; \varnothing 28 x 30	61002343	2	
8	Hex nut; M 4 self-locking	21 05 300		

GS 41/5



GS 41/5

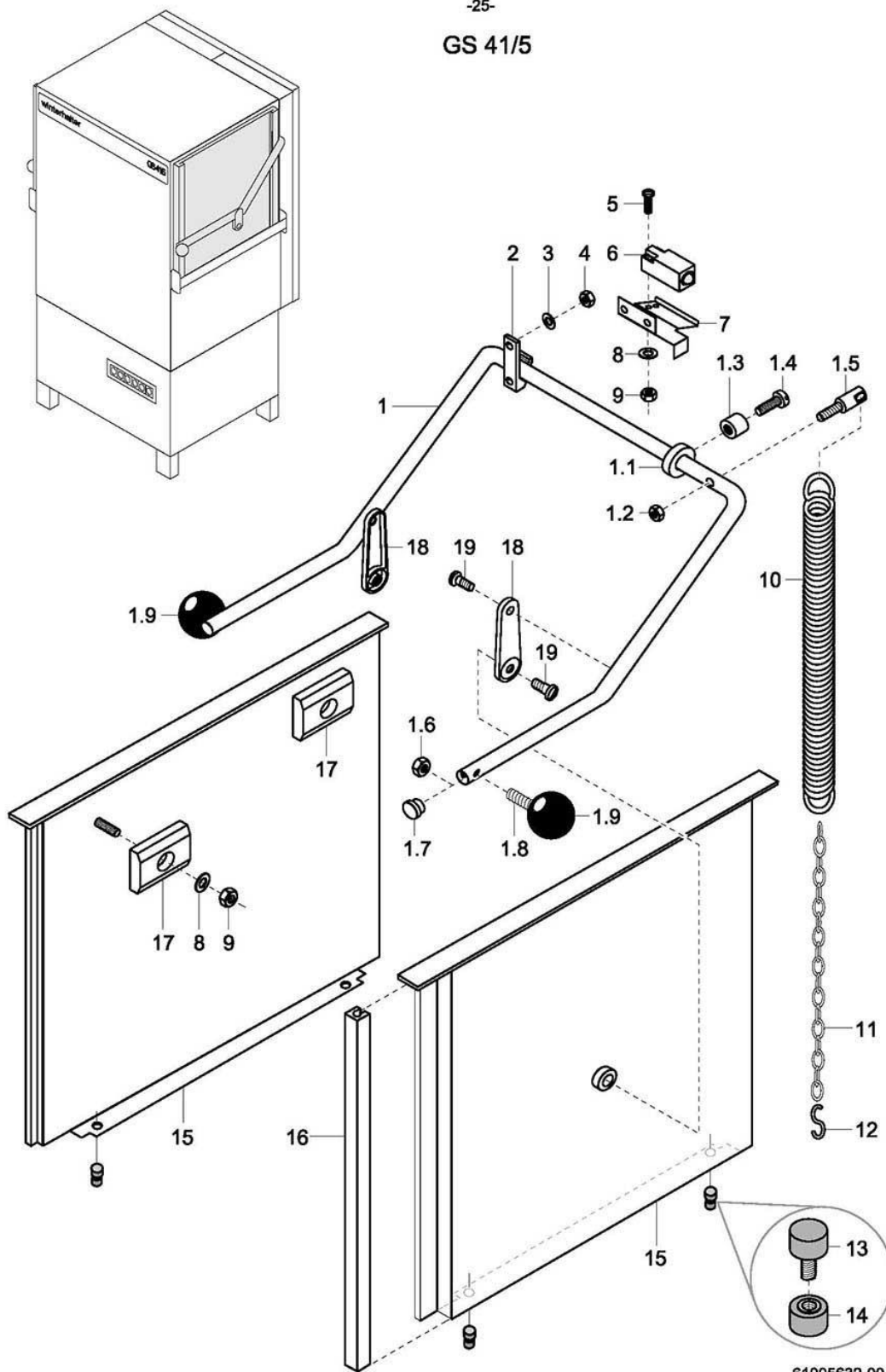


GS 41/5

Panelling

Item	Designation	Part no.	Pc.	Notes
1	Rear panel	61004292		
2	Wall end piece, cpl.; depth of table 700mm	80002160		Special equipment
	Wall end piece, cpl.; depth of table 800mm	80002161		
3	Sealing strip	61004167	2	
4	Dome-head nut; M 5	21 10 303		
5	Washer; \varnothing 5,3 x \varnothing 12 x 0,8	22 02 313		
6	Rack rail; rear	61004424		368 324...
	Rack rail; rear; with rack rail 430mm	61004426		
n.p.	Rack rail; front	61004423		
	Rack rail; front; with rack rail 430mm	61004425		
n.p.	Rack rail; rear	61004161		...368 323
	Rack rail; rear; with rack rail 430mm	61004228		
n.p.	Rack rail; front	61004160		
	Rack rail; front; with rack rail 430mm	61004187		
7	Case	61004185		
8	Supporting frame	61004242		
9	Sheet-metal nut; B 3.9	21 17 300		
10	Panel; right	61004259		
11	Sheet-metal screw; B 3,9 x 13	20 20 310		
12	Cover plate	61002611		
13	Hex nut; M 5 self-locking	21 05 302		
14	Hex nut; M 6	21 01 304		
15	Lock washer; B 6	23 03 300		
16	Washer; \varnothing 6.4 x \varnothing 12.5 x 1.6	22 01 302		
17	Clamping bracket; 1.5 - 6.0 mm ²	31 09 095		
18	Threaded insert; G 3/4"; 42 x 62 x 50	35 01 063	4	
n.p.	Foot extension; 50mm	80000542	4	Special equipment
n.p.	Foot extension; 100mm	80000546	4	
n.p.	Foot extension; 150mm	80000587	4	
n.p.	Foot bracket	80000640	4	Naval fastening
19	Foot cleat; G 3/4"; 32 x 32 x 100	35 01 064	4	
20	Hex nut; M 6 self-locking	21 05 304		
21	Hex nut; M 4	21 01 302		
22	Panel	61004257		
n.p.	Sign; "CE"	28 03 337		
23	Pan-head screw; M 5 x 16	20 10 224		
24	Strut retainer	61004006	4	
25	Pan-head screw; M 4 x 45	20 10 328		
26	Hex nut; M 5	21 01 303		
27	Suspension; relay box	61004169		
28	Panel; left	61004258		
29	Strip label; "GS 41/5"	61004217		

GS 41/5



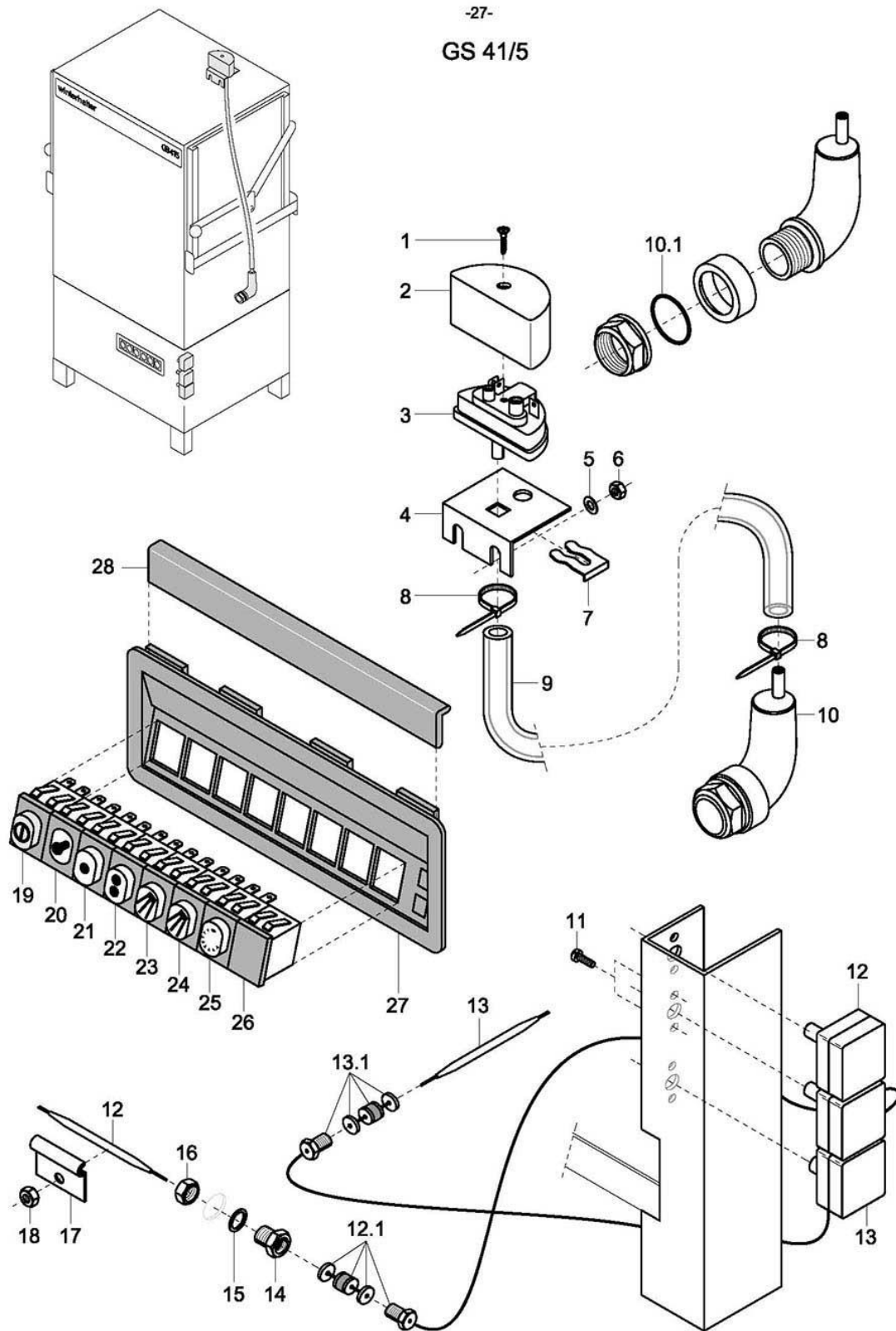
61005632-00

GS 41/5

Door

Item	Designation	Part no.	Pc.	Notes
1	Door lever; cpl.	61004244		incl. items 1.1 - 1.9
1.1	Setting collar	23 05 001		
1.2	Hex nut; M 8	21 02 303		
1.3	Roller	35 01 054		
1.4	Cylinder-head screw; M 6 x 25	20 19 200		
1.5	Spring brace; \varnothing 12 x 80	61002522	2	
1.6	Hex nut; M 8	21 01 305	2	
1.7	Sealing cap; black; \varnothing 19,6 x 22 x 1,5	35 03 004	2	
1.8	Grub screw; M 8 x 25	20 30 002	2	
1.9	Ball handle; \varnothing 40; M 8	28 05 012	2	
2	Door lever bearing	35 01 066	2	
3	Washer; \varnothing 6.4 x \varnothing 12.5 x 1.6	22 01 302		
4	Hex nut; M 6 self-locking	21 05 304		
5	Pan-head screw, M 4 x 25	20 10 215		
6	Limit switch	80003235		
n.p.	Reducing ring; PG 13.5/9	31 10 059		
n.p.	Cable gland; PG 9	31 10 042		
7	Support; limit switch	61003528		
8	Washer; \varnothing 4.3 x \varnothing 8 x 0.5	22 02 202		
9	Hex nut; M 4 self-locking	21 05 300		
10	Tension spring	28 04 001	2	
11	Link chain; 260mm	28 15 008	2	per metre
12	S-hook	28 15 009	2	
13	Buffer; \varnothing 10 x 8; M 4 x 8	40 06 006	4	with grub screw
14	Buffer; \varnothing 10 x 8; M 4	40 06 020	4	with internal thread
15	Door	61004171	2	
16	Slide bar	61004175	4	
n.p.	Sheet-metal screw; B 2.9 x 6.5	20 20 308		
17	Cover	35 01 162	4	
18	Draw bar	61002310	2	
19	Door lever bolt; M 8 x 23	20 18 262	4	

GS 41/5

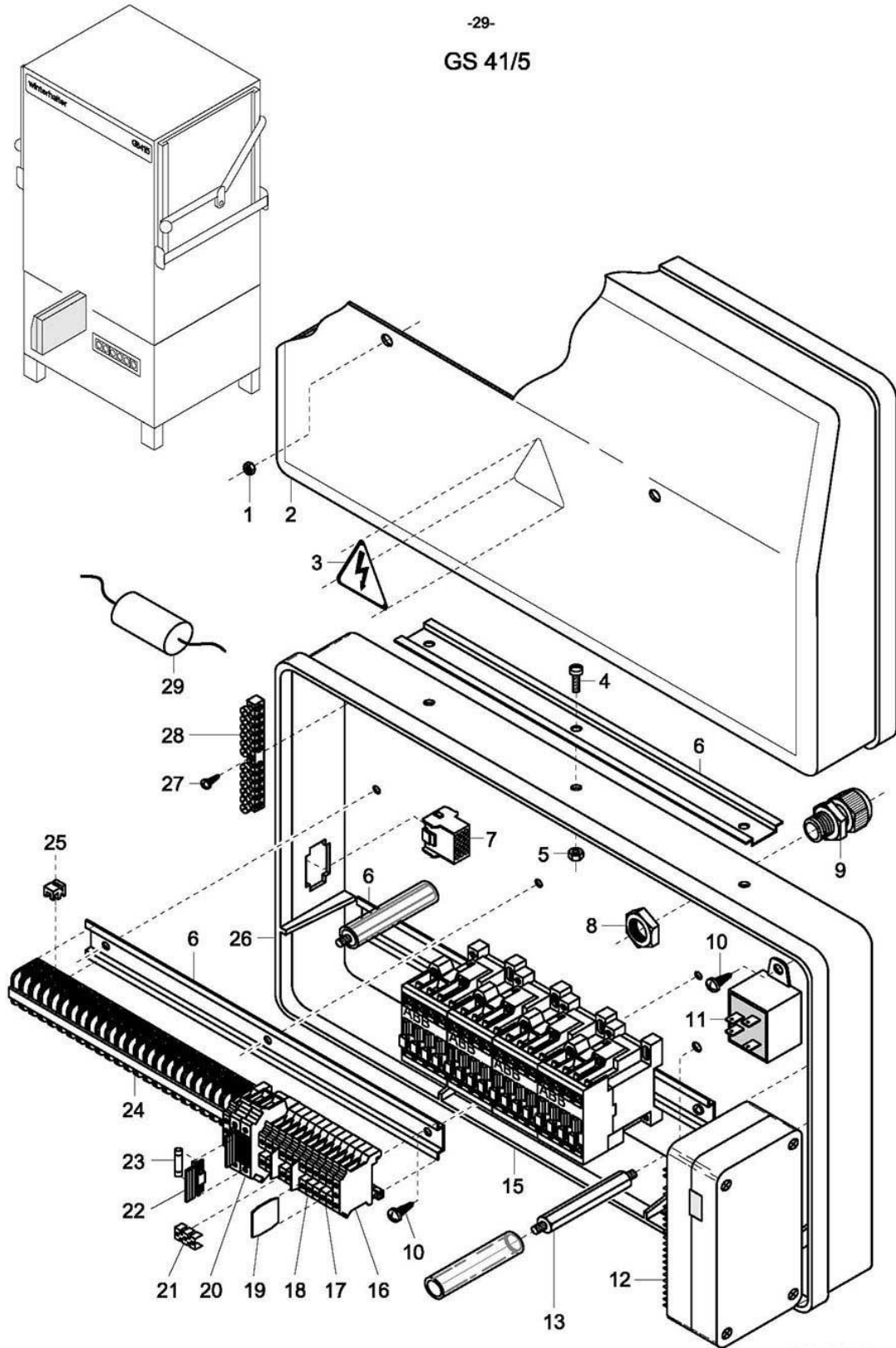


GS 41/5

Electrical parts I

Item	Designation	Part no.	Pc.	Notes
1	Sheet-metal screw; B 3.9 x 9.5	20 20 307		
2	Cap for level controller	61004190		
3	Level controller; 250V; 50/60Hz	31 26 003		green
4	Support; level controller	61004256		
5	Washer; \varnothing 5,3 x \varnothing 12 x 0,8	22 02 313		
6	Hex nut; M 5 self-locking	21 05 302		
7	Clamping spring for level controller	31 26 001		
8	Wire hose clamp; D8,6 x 1	28 02 348		
9	Hose; nom. dia. 5 x 1.5	40 01 024		per metre
10	Air chamber cpl.	55 04 024		incl. item 10.1
10.1	O-ring; 24 x 3.0	27 07 066		
	Seal; \varnothing 26 x \varnothing 36 x 2,0			replaced by 55 04 024
11	Pan-head screw; M 4 x 8	20 10 309		
12	Thermostat; 1750mm long	31 25 013	2	incl. item 12.1
12.1	Stuffing box gland	31 25 012		
13	Safety thermostat; 140°C - 10K "OFF"	31 25 030		incl. item 13.1
13.1	Stuffing box gland	31 25 012		
14	Stuffing box for thermostat; M 14 x 1	31 25 001		
15	Seal; \varnothing 14.2 x \varnothing 20 x 2.0	27 09 036		
16	Hex nut; M 14 x 1 x 5	31 25 002		
17	Thermostat clip	55 19 011		
18	Hex nut; M 5 self-locking	21 05 302		
n.p.	Thermostat holder	61003390		with switchable rinse temperature
19	Push-button switch; "W" green 250 V	31 24 185		On / Off
20	Lamp; white; 230V AC	31 08 116		Tank heating
21	Push-button; white; 250V	31 24 165		Programme I
22	Push-button; white; 250V	31 24 166		Programme II
23	Push-button, white	31 24 128		Manual wash
24	Push-button; white; 250V	31 24 129		Manual rinse
25	Lamp; white; 230V	31 08 064		Running programme
26	Filler piece	31 24 187		
n.p.	Push-button; white; 250V	31 24 192		only with switchable rinse temperature
27	Switch panel	61004233		
28	Clamping profile	61004234		

GS 41/5

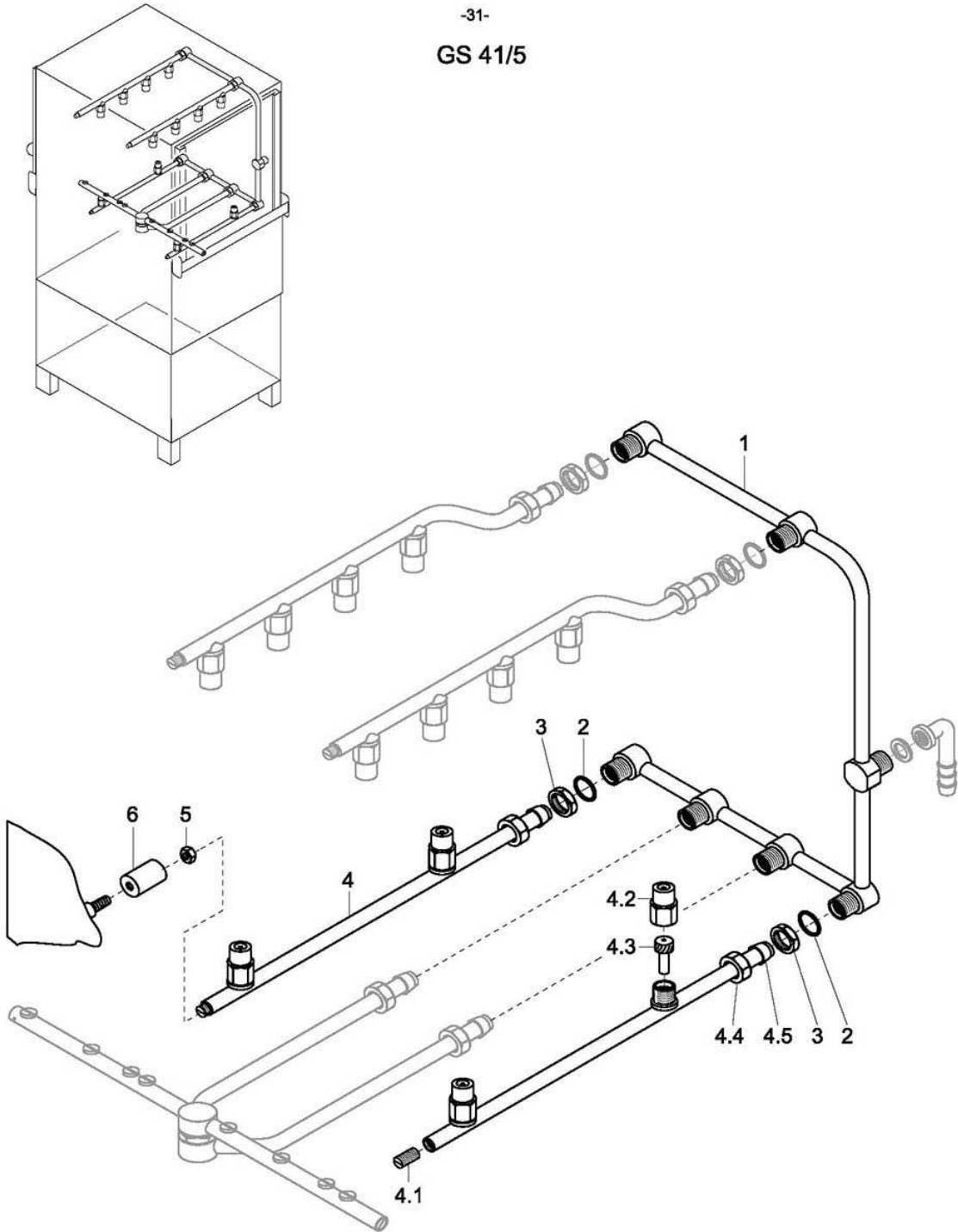


GS 41/5

Electrical parts II

Item	Designation	Part no.	Pc.	Notes
1	Hex nut; M 6 self-locking	21 05 304		
2	Switch box cover	61002408		
3	Sign; high-voltage flash	28 03 009		
4	Oval-head screw; M 4 x 8	20 10 310	3	
5	Hex nut; M 4 self-locking	21 05 300	3	
6	Snap-on rail; 7,5 x 35 x 315	61002397	3	
7	Reception case	31 12 075		
8	Hex nut; PG 21	31 10 071	3	
9	Cable gland PG 21 with strain relief device	31 10 070	3	
n.p.	Hex nut; PG 13.5	31 10 041		with pressureless boiler
n.p.	Cable gland; PG 13.5	31 10 040		
n.p.	Hex nut; PG 16	31 10 110		with 12kW heating elements
n.p.	Cable gland; PG 16 with strain relief device	31 10 049		
n.p.	Hex nut; PG 29	31 10 047		
n.p.	Cable gland; PG 29	31 10 123		
10	PT screw; KB 50 x 8	20 17 001	8	
11	Radio interf. suppr. capacitor; 3 x (0.47 μ F + 1M Ω)	31 13 072		with Y-voltage
12	Electr. Programme switch; EPS 1.1; 230V	31 05 131		
	Electr. Programme switch; EPS 1.1; 200V; 240V	31 05 132		
13	Stud; M 6; width across flats 10 x 126	61003313	2	
15	Contacteur; A16; 220-255V; 50/60Hz	31 04 162		
	Contacteur; A16; 200V; 50/60Hz	31 04 163		
16	Universal terminal; USLKG 10 gn-ye	31 09 059	2	
17	Universal terminal; UK 10 blue	31 09 058	2	
18	Universal terminal; grey UK 10	31 09 057	9	
	Universal terminal; grey UK 35	31 09 172		Japan
19	Isolating disk TS-K	31 09 066	3	
20	Universal fuse terminal; UK-Si	31 09 063	2	
21	Fixed bridge; 3-pin; FB 10-8	31 09 138	3	
n.p.	Fixed bridge; 2-pin; FB 10-8	31 09 128		
22	Fused plug	31 09 072	2	
23	Fine-wire fuse; 250V; 6.3A	31 11 043	4	
24	Strip terminal BK 4 - FS/FS	31 09 025	23	
25	Straps	31 09 012	6	
26	Bottom part of relay box	61002617		
27	PT screw; KB 30 x 14	20 17 002		
28	Terminal block; PE KLB 12/SEV	31 09 094		
29	Radio interf. suppr. capacitor; 33000pF; 250V	31 13 073		with Y-voltage
n.p.	Wire assortment; control	61004468		
n.p.	Wire assortment; programme switch	61003882		
n.p.	Cable harness; three-phase current	61003884		
n.p.	Cable harness; control	61003885		
n.p.	Cable harness with connector	61004393		
n.p.	Wire assortment; radio interf. suppr. capacitor	61004467		
n.p.	Wire assortment; three-phase current	61004466		with Y-voltage

GS 41/5



GS 41/5

Glass-washing kit (option)

Item	Designation	Part no.	Pc.	Notes
1	Rinse manifold	61004239		
2	O-ring; 16 x 2.5	27 07 001	6	from 10/98
	Seal; \varnothing 17 x \varnothing 24 x 2.0	27 09 009	6	until 09/98
3	Hex nut; G 3/8" x 5.5	30 09 200	6	
4	Rinse pipe; outside; cpl.	80000128	2	incl. items 4.1 - 4.5
4.1	Grub screw; M 9 x 40	20 30 502	2	
4.2	Nozzle cap; \varnothing 14.6 x 21	65002765	4	
4.3	Nozzle swirl device; \varnothing 8 x 18.8	65002764	4	
4.4	Cap nut; G 3/8" x \varnothing 10.2	29 07 200	2	
4.5	Cutting ring; \varnothing 13 x 10; nom. dia. 10	29 07 303	2	
5	Hex nut; M 4 self-locking	21 05 300		
6	Bush; \varnothing 28 x 30	61002343	2	